

An ESPEC Exclusive: >> SCP-220 Programmer

Brings a High-End User Interface to Everyone...
Without a Premium Price

SCP-220 PROGRAMMER/CONTROLLER	
Display	Color TFT (Active Matrix), 640x480 resolution (6.5 inch)
Control Method	PID (Proportional, Integral, Derivative)
Communications (optional)	GP-IB, RS-485 or RS-232
Operating Modes (as indicated in upper left of the display)	STOP chamber off, programmer on PGM: RUN running selected test profile CONSTANT running at set value continually
Program Capacity	<ul style="list-style-type: none"> • 20 programs, 99 steps per program • 10 pre-programmed tests stored in ROM • Linking between programs possible
Programming Capabilities	<ul style="list-style-type: none"> • Copy programs, even from ROM • Copy, edit, insert, and delete steps • Two nested loops to repeat steps 99 times • Selectable end-of-test modes • Create pause steps within programs • Soak control delays timer until setpoint is reached
Additional Functions	<ul style="list-style-type: none"> • Alarm report lists last 100 alarms and time occurred • Time signal relay control • High and low limit alarm functions • Audible alarm with on-screen explanation • Selectable restart modes after power failure • Calendar timer for automatic start and stop • Keylock protection and configuration lock out • Service guide and help screens • Adjustable trend graph display with up to 15 day history

SCP-220TS version for thermal shock models has similar, but different screens and capabilities than shown here.

Remarkably simple to use and understand

Imagine walking up to your new chamber and immediately being able to get your test running. It was revolutionary when computers became easy to use—now ESPEC does the same for environmental testing. The SCP-220 makes it a breeze to set up, run, and monitor your chamber, even for the infrequent user. You won't find a controller from any other chamber manufacturer that's as easy to use.

Our active-matrix LCD display is easy to check at a glance. The touch-screen prompts are logical and navigation is easy. When data entry is required, a numeric or alphanumeric keypad is displayed. With 150 help screens (including maintenance instructions), you may rarely need to refer to your manual. Alarm screens diagnose the type of problem and provide troubleshooting help.

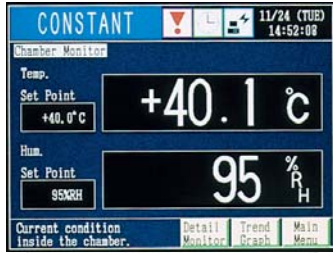
The SCP-220 comes preprogrammed with 10 standard tests, but you can add 20 more. For easy recall, you can store each program with a 16 character name. Even complex programs with pauses and loops are easy to set. The display automatically draws your test profile as you enter it, reducing the chance of programming errors.

For improved performance, an optional product temperature control feature is available that drives air beyond the temperature set point, speeding recovery of the product temperature. Also optional are computer interfaces with downloadable software or LabView drivers for remote control and data-logging.

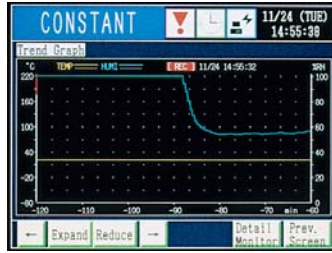


Look for this icon indicating products equipped with the SCP-220 programmer

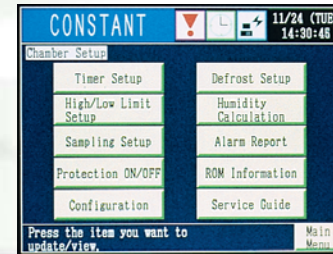
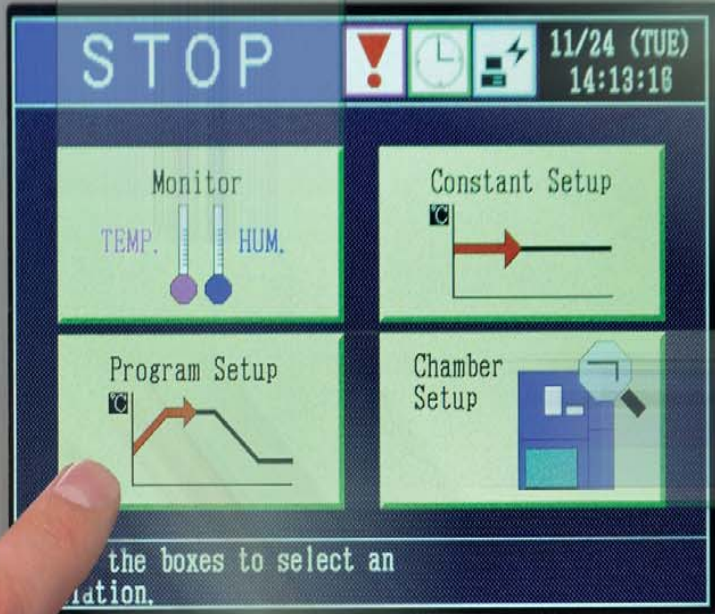
Main monitor screen displays current temperature and humidity



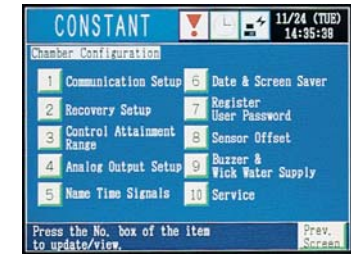
Trend graph screen could eliminate the need for a chart recorder



One brief screen allows quick set-up of a constant condition test

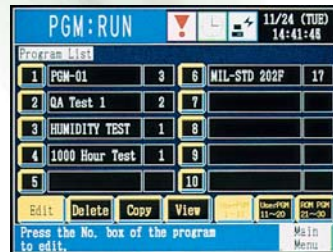


A clear list is provided for available controller functions and settings



The configuration screen allows easy access to universal settings such as "recovery setup" for power failures

Select one of your programs, or modify a preprogrammed one



Pressing a step number brings up a screen to change the values for that step

